

7'x16' R & M Mfg. Inc Enclosed Cargo



\$7,675

Stock #: BH23033

VIN/Serial: 55ZR1EE27V1014942

Category: Enclosed Cargo

Cond.: New

Year: 2027

Make: R & M Mfg. Inc

Model: 7X16 7K TAS - 78"

Color: Silver

Width: 7' **Length:** 16'

GVWR: 7,000

ADDITIONAL DETAILS: MSRP: \$9,594, Height: 78", Weight: 2,350, Payload: 4,650, Axle (lbs): 3,500, Axles: 2, # Ramps: 1, Pull Type: Bumper, Nose Type: V-Front, Roof Type: Flat, Construction: Steel Frame / Aluminum Skin

FEATURES:

- * 2 - 3500LB STRAIGHT AXLES
- * SPRING SUSPENSION
- * ELECTRIC BRAKES
- * 5" TUBE STEEL TONGUE & MAIN FRAME
- * 16" ON CENTER ANGLE IRON FLOOR MEMBERS
- * 24" ON CENTER WALL UPRIGHTS & CEILING BOWS
- * 78" INTERIOR HEIGHT
- * SMOOTH SCREW-LESS .030" ALUMINUM EXTERIOR
- * PLASTIC FLOW THROUGH VENTS
- * 24" TALL DIAMOND PLATE FRONT STONE GUARD
- * DIAMOND PLATE WRAPPED TONGUE
- * POLISHED NOSE CONE
- * 24" DEEP ROUNDED V-NOSE
- * DOT COMPLIANT LED TRAILER LIGHTS
- * 1-PIECE ALUMINUM ROOF
- * 3/8" PAKTITE WALL LINER
- * 3/4" PAKTITE FLOOR LINER
- * REAR SPRING ASSISTED RAMP DOOR (2000# RATED)
- * ALUMINUM REAR HEADER COVER
- * 36" CURB SIDE ENTRY DOOR WITH RV LATCH
- * 15" STEEL WHEELS
- * 205/75 R15 6 PLY RADIAL TIRES
- * 5-BOLT HUBS
- * 2000# A FRAME TONGUE JACK
- * 2 5/16" A FRAME COUPLER
- * INTERIOR LIGHT
- * 7 PIN TRAILER WIRING CONNECTOR
- * COLOR - SILVER
- * FINANCING OPTIONS AVAILABLE! CALL (605)-593-5933 OR VISIT WWW.RAPIDTRAILERSALES.COM FOR MORE INFORMATIO...



Rapid Trailer Sales

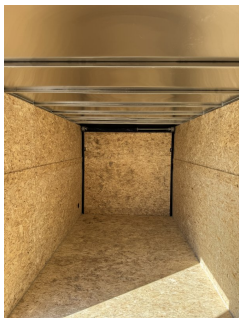
(605) 593-5933

www.RapidTrailerSales.com

4651 E Mall Dr

Box Elder, SD 57719

#BH23033 Continued ...



Rapid Trailer Sales
(605) 593-5933
www.RapidTrailerSales.com
4651 E Mall Dr
Box Elder, SD 57719