

## 8.5'x32' AERO Enclosed Cargo

**\$23,575****Stock #:** AE11704**VIN/Serial:** 7PUGC3221TW000640**Category:** Enclosed Cargo**Cond.:** New**Year:** 2026**Make:** AERO**Model:** 8.5X32 14K GN - HYD JACKS**Color:** Charcoal**Width:** 8.5" **Length:** 32"**GVWR:** 14,000

ADDITIONAL DETAILS: MSRP: \$39,469, Height: 84", Weight: 6,000, Payload: 8,000, Axle (lbs): 7,000, Axles: 2, # Ramps: 1, Pull Type: Gooseneck, Nose Type: V-Front, Roof Type: Flat, Construction: Steel Frame / Aluminum Skin

### FEATURES:

- \* 24' FLOOR, 8' BUNK
- \* 2 - 7000# LIPPERT EZ LUBE AXLES
- \* SPRING SUSPENSION
- \* ELECTRIC BRAKES
- \* STEEL FRAME CONSTRUCTION WITH POWDER COAT FINISH
- \* 16" ON CENTER FLOOR, WALL, AND CEILING BOWS
- \* 84" INTERIOR HEIGHT
- \* SMOOTH SCREWLESS 0.040 ALUMINUM EXTERIOR
- \* DOT COMPLIANT LED TRAILER LIGHTS
- \* STACKED TAIL LIGHT UPGRADE
- \* 1-PIECE ALUMINUM ROOF
- \* WHITE VINYL WALL LINER
- \* REAR RAMP DOOR
- \* 4' BEAVERTAIL
- \* 3/4" TONGUE AND GROOVE OSB FLOORING
- \* CURB SIDE ENTRY DOOR WITH RV LATCH
- \* 16" ALUMINUM WHEELS
- \* 235/80 R16 10 PLY RADIAL TIRES
- \* 8-BOLT HUBS
- \* DUAL BIGFOOT HYDRAULIC JACKS
- \* 2 5/16" ADJUSTABLE HEIGHT GOOSENECK COUPLER
- \* 2 - 12V LED INTERIOR LIGHTS
- \* 3 WAY SWITCHES FOR INTERIOR LIGHTS
- \* 4 - RECESSED D RINGS 6000# RATED
- \* COLOR - CHARCOAL WITH BLACKOUT TRIM PACKAGE
- \* FINANCING OPTIONS AVAILABLE! CALL (605)-593-5933 OR VISIT [WWW.RAPIDTRAILERSALES.COM](http://WWW.RAPIDTRAILERSALES.COM) FOR MORE INFORMATION.

WHILE EVERY EFFORT HAS BEEN MADE TO ENSURE ACCURATE LISTINGS, THEY MAY NOT REFLECT ALL ACCURATE SPECIFICATIONS. PLEASE CONTACT US TO VERIFY ANY INFORMATION LISTED. WE ARE NOT RESPONSIBLE FOR PRIC...



Rapid Trailer Sales

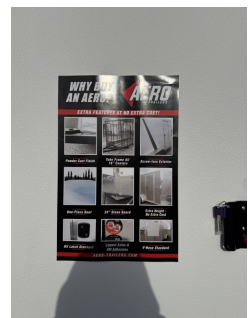
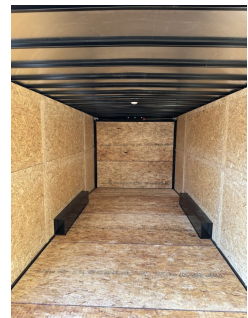
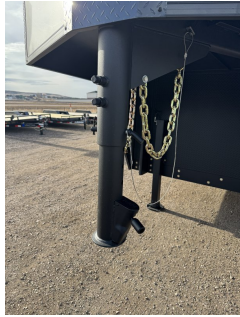
(605) 593-5933

[www.RapidTrailerSales.com](http://www.RapidTrailerSales.com)

4651 E Mall Dr

Box Elder, SD 57719

#AE11704 Continued ...



Rapid Trailer Sales  
(605) 593-5933  
[www.RapidTrailerSales.com](http://www.RapidTrailerSales.com)  
4651 E Mall Dr  
Box Elder, SD 57719