

## 8.5'x16' AERO Enclosed Cargo



**\$10,795**

**Stock #:** AE11701

**VIN/Serial:** 7PUBC162XTW000712

**Category:** Enclosed Cargo

**Cond.:** New

**Year:** 2026

**Make:** AERO

**Model:** 8.5X16 TA52 UTV CHARCOAL

**Color:** Charcoal

**Width:** 8.5" **Length:** 16"

**GVWR:** 9,900

ADDITIONAL DETAILS: MSRP: \$13,494, Height: 7", Weight: 3,200, Payload: 6,700, Axle (lbs): 5,200, Axles: 2, # Ramps: 1, Pull Type: Bumper, Nose Type: V-Front, Roof Type: Flat, Construction: Steel Frame / Aluminum Skin

### FEATURES:

- \* 2 - 5200LB LIPPERT EZ LUBE AXLES
- \* LEAF SPRING SUSPENSION
- \* ELECTRIC BRAKES
- \* STEEL FRAME CONSTRUCTION WITH POWDER COAT FINISH
- \* 16" ON CENTER FLOOR, WALL, AND CEILING BOWS
- \* 84" INTERIOR HEIGHT
- \* 28" DEEP V-NOSE
- \* SMOOTH SCREW-LESS 0.030" ALUMINUM EXTERIOR
- \* 24" TALL DIAMOND PLATE STONE GUARD
- \* DOT COMPLIANT LED TRAILER LIGHTS
- \* 1-PIECE ALUMINUM ROOF
- \* 3/4" TONGUE AND GROOVE OSB FLOOR
- \* REAR RAMP DOOR
- \* BEAVERTAIL
- \* ROAD SIDE ENTRY DOOR WITH RV LATCH
- \* 15" STEEL WHEELS
- \* 225/75 R15 8 PLY RADIAL TIRES
- \* 6-BOLT HUBS
- \* EXTENDED TONGUE
- \* 7K DROP LEG TONGUE JACK
- \* 2 5/16" ADJUSTABLE HEIGHT COUPLER
- \* INTERIOR LIGHT
- \* 4 - D RINGS 6000# RATED
- \* COLOR - CHARCOAL
- \* FINANCING OPTIONS AVAILABLE! CALL (605)-593-5933 OR VISIT [WWW.RAPIDTRAILERSALES.COM](http://WWW.RAPIDTRAILERSALES.COM) FOR MORE INFORMATION.

WHILE EVERY EFFORT HAS BEEN MADE TO ENSURE ACCURATE LISTINGS, THEY MAY NOT REFLECT ALL ACCURATE SPECIFICATIONS. PLEASE CONTACT US TO VERIFY ANY INFORMATION LISTED. WE ARE NOT RESPONSIBLE FOR PRICING OR TYPOGRAPHICAL ERRORS.



Rapid Trailer Sales

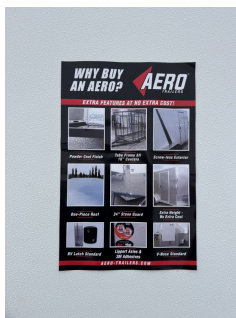
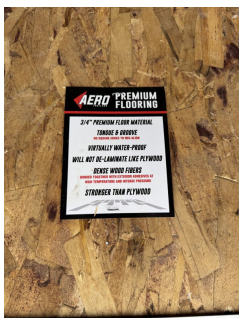
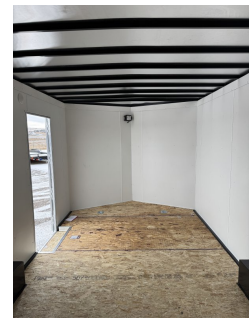
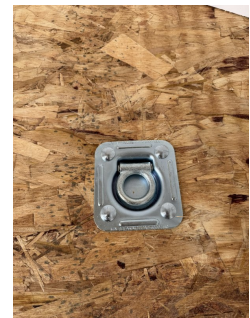
(605) 593-5933

[www.RapidTrailerSales.com](http://www.RapidTrailerSales.com)

4651 E Mall Dr

Box Elder, SD 57719

#AE11701 Continued ...



Rapid Trailer Sales  
(605) 593-5933  
[www.RapidTrailerSales.com](http://www.RapidTrailerSales.com)  
4651 E Mall Dr  
Box Elder, SD 57719