

8.5'x16' AERO Enclosed Cargo



\$10,450

Stock #: AE11700

VIN/Serial: 7PUBC1628TW000711

Category: Enclosed Cargo

Cond.: New

Year: 2026

Make: AERO

Model: 8.5X16 TA52 WHITE - BARN DOORS

Color: White

Width: 8.5' **Length:** 16'

GVWR: 9,900

ADDITIONAL DETAILS: MSRP: \$13,063, Height: 84", Weight: 3,000, Payload: 6,900, Axle (lbs): 5,200, Axles: 2, Pull Type: Bumper, Nose Type: V-Front, Roof Type: Flat, Construction: Steel Frame / Aluminum Skin, Features: Barn Doors

FEATURES:

- * 2 - 5200LB LIPPERT EZ LUBE AXLES
- * SPRING SUSPENSION
- * ELECTRIC BRAKES
- * STEEL FRAME CONSTRUCTION WITH POWDER COAT FINISH
- * 16" ON CENTER FLOOR, WALL, AND CEILING BOWS
- * 84" INTERIOR HEIGHT
- * 28" DEEP V-NOSE
- * SMOOTH SCREW-LESS 0.030" ALUMINUM EXTERIOR
- * 24" TALL DIAMOND PLATE STONE GUARD
- * DOT COMPLIANT LED TRAILER LIGHTS
- * 1-PIECE ALUMINUM ROOF
- * REAR BARN DOORS
- * STRAIGHT FLOOR - NO BEAVERTAIL
- * 3/4" TONGUE AND GROOVE OSB FLOOR
- * CURB SIDE ENTRY DOOR WITH RV LATCH
- * 15" STEEL WHEELS
- * 225/75 R15 8 PLY RADIAL TIRES
- * 6-BOLT HUBS
- * EXTENDED TONGUE
- * 7K DROP LEG TONGUE JACK
- * 2 5/16" ADJUSTABLE HEIGHT COUPLER
- * 12V INTERIOR LIGHT
- * 4 - D RINGS 6000# RATED
- * COLOR - WHITE
- * FINANCING OPTIONS AVAILABLE! CALL (605)-593-5933 OR VISIT WWW.RAPIDTRAILERSALES.COM FOR MORE INFORMATION.

WHILE EVERY EFFORT HAS BEEN MADE TO ENSURE ACCURATE LISTINGS, THEY MAY NOT REFLECT ALL ACCURATE SPECIFICATIONS. PLEASE CONTACT US TO VERIFY ANY INFORMATION LISTED. WE ARE NOT RESPONSIBLE FOR PRICING OR TYPOGRAPHICAL ERRORS.



Rapid Trailer Sales

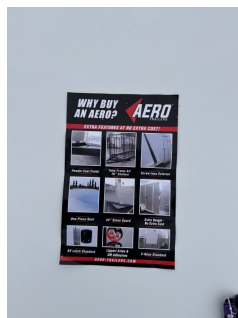
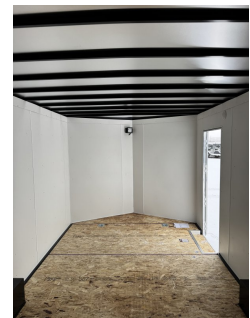
(605) 593-5933

www.RapidTrailerSales.com

4651 E Mall Dr

Box Elder, SD 57719

#AE11700 Continued ...



Rapid Trailer Sales
(605) 593-5933
www.RapidTrailerSales.com
4651 E Mall Dr
Box Elder, SD 57719