

## 7'x12' AERO Enclosed Cargo

**\$7,275****Stock #:** AE11688**VIN/Serial:** 7PUBC1229TW000559**Category:** Enclosed Cargo**Cond.:** New**Year:** 2026**Make:** AERO**Model:** 7X12 TA35 WHITE**Color:** White**Width:** 7' **Length:** 12'**GVWR:** 7,000

ADDITIONAL DETAILS: MSRP: \$9,094, Height: 80", Weight: 1,850, Payload: 5,150, Axle (lbs): 3,500, Axles: 2, # Ramps: 1, Pull Type: Bumper, Nose Type: V-Front, Roof Type: Flat, Construction: Steel Frame / Aluminum Skin

### FEATURES:

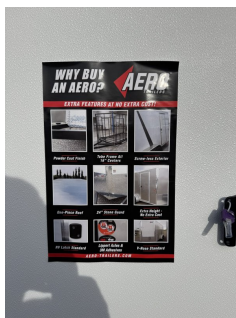
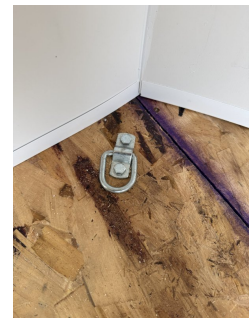
- \* 2 - 3500# LIPPERT SPRING AXLES
- \* ELECTRIC BRAKES
- \* TUBULAR STEEL FRAME CONSTRUCTION WITH POWDER COAT FINISH
- \* 16" ON CENTER FLOOR, WALL, AND CEILING BOWS
- \* 80" INTERIOR HEIGHT
- \* SMOOTH SCREW-LESS 0.030" ALUMINUM EXTERIOR
- \* 24" TALL DIAMOND PLATE STONE GUARD
- \* 28" DEEP V-NOSE
- \* DOT COMPLIANT LED TRAILER LIGHTS
- \* 1-PIECE ALUMINUM ROOF
- \* REAR RAMP DOOR
- \* CURB SIDE ENTRY DOOR WITH RV LATCH
- \* 15" STEEL WHEELS
- \* 205/75 R15 6 PLY RADIAL TIRES
- \* 6-BOLT HUBS
- \* EXTENDED TONGUE
- \* SIDE SWIVEL TONGUE JACK
- \* 2 5/16" A FRAME COUPLER
- \* INTERIOR LIGHT
- \* 4- D RINGS
- \* COLOR - WHITE
- \* FINANCING OPTIONS AVAILABLE! CALL (605)-593-5933 OR VISIT [WWW.RAPIDTRAILERSALES.COM](http://WWW.RAPIDTRAILERSALES.COM) FOR MORE INFORMATION.

WHILE EVERY EFFORT HAS BEEN MADE TO ENSURE ACCURATE LISTINGS, THEY MAY NOT REFLECT ALL ACCURATE SPECIFICATIONS. PLEASE CONTACT US TO VERIFY ANY INFORMATION LISTED. WE ARE NOT RESPONSIBLE FOR PRICING OR TYPOGRAPHICAL ERRORS.



Rapid Trailer Sales  
(605) 593-5933  
[www.RapidTrailerSales.com](http://www.RapidTrailerSales.com)  
4651 E Mall Dr  
Box Elder, SD 57719

#AE11688 Continued ...



Rapid Trailer Sales  
(605) 593-5933  
[www.RapidTrailerSales.com](http://www.RapidTrailerSales.com)  
4651 E Mall Dr  
Box Elder, SD 57719