

## 102"x25' Lamar Equipment



**\$15,495**

**Stock #:** LM4699

**VIN/Serial:** 5RVBF2520TP150916

**Category:** Equipment

**Cond.:** New

**Year:** 2026

**Make:** Lamar

**Model:** 102X25 22K GOOSENECK EQUIP - HYD JACKS

**Color:** Gray

**Width:** 102" **Length:** 25'

**GVWR:** 22,000

ADDITIONAL DETAILS: MSRP: \$19,369, Weight: 5,845, Payload: 16,155, Axle (lbs): 10,000, Axles: 2, # Ramps: 2, Pull Type: Gooseneck, Construction: Steel

### FEATURES:

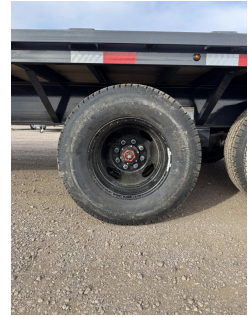
- \* 2 - 10K DEXTER AXLES
- \* OIL BATH HUBS
- \* SLIPPER SPRING SUSPENSION
- \* ELECTRIC BRAKES
- \* 235/80 R16 10 PLY TIRES
- \* BLACK WHEELS
- \* MATCHING SPARE TIRE & MOUNT IN NECK
- \* 2 5/16" 30K ADJUSTABLE HEIGHT GOOSENECK COUPLER
- \* DUAL HYDRAULIC JACKS
- \* SIDE MOUNT LOCKING TOOLBOX (PUMP & BATTERY STORAGE)
- \* FRONT LOCKING TOOL BOX BETWEEN RISERS
- \* 5' DOVETAIL
- \* PAIR OF RHINO RAMPS
- \* STANDARD STAKE POCKETS
- \* RUB RAIL
- \* 12" X 19 LB I BEAM FRAME (STANDARD HEIGHT)
- \* 16" ON CENTER CROSS MEMBERS
- \* TREATED YELLOW PINE FLOOR
- \* DOT COMPLIANT LED TRAILER LIGHTS
- \* LAMAR GRAY POWDER COAT FINISH
- \* FINANCING OPTIONS AVAILABLE! CALL 605-593-5933 OR VISIT [WWW.RAPIDTRAILERSALES.COM](http://WWW.RAPIDTRAILERSALES.COM) FOR MORE INFORMATION.

WHILE EVERY EFFORT HAS BEEN MADE TO ENSURE ACCURATE LISTINGS, THEY MAY NOT REFLECT ALL ACCURATE SPECIFICATIONS. PLEASE CONTACT US TO VERIFY ANY INFORMATION LISTED. WE ARE NOT RESPONSIBLE FOR PRICING OR TYPOGRAPHICAL ERRORS.



Rapid Trailer Sales  
(605) 593-5933  
[www.RapidTrailerSales.com](http://www.RapidTrailerSales.com)  
4651 E Mall Dr  
Box Elder, SD 57719

#LM4699 Continued ...



Rapid Trailer Sales  
(605) 593-5933  
[www.RapidTrailerSales.com](http://www.RapidTrailerSales.com)  
4651 E Mall Dr  
Box Elder, SD 57719