

## 7'x18' AERO Enclosed Cargo

**\$9,195****Stock #:** AE11687**VIN/Serial:** 7PUBC1827TW000616**Category:** Enclosed Cargo**Cond.:** New**Year:** 2026**Make:** AERO**Model:** 7X18 TA52 - PLY WALLS**Color:** White**Width:** 7' **Length:** 18'**GVWR:** 9,900

ADDITIONAL DETAILS: MSRP: \$11,494, Height: 80", Weight: 2,950, Payload: 6,950, Axle (lbs): 5,200, Axles: 2, # Ramps: 1, Pull Type: Bumper, Nose Type: V-Front, Roof Type: Flat, Construction: Steel Frame / Aluminum Skin

### FEATURES:

- \* 2 - 5200LB LIPPERT SPRING AXLES
- \* ELECTRIC BRAKES
- \* TUBULAR STEEL FRAME CONSTRUCTION WITH POWDER COAT FINISH
- \* 16" ON CENTER FLOOR, WALL, AND CEILING BOWS
- \* 3/4" TONGUE AND GROOVE OSB FLOOR
- \* 3/8" PLYWOOD WALL LINER
- \* 80" INTERIOR HEIGHT
- \* 76" REAR DOOR OPENING HEIGHT
- \* 28" DEEP V-NOSE
- \* SMOOTH SCREW-LESS 0.030" ALUMINUM EXTERIOR
- \* 24" TALL DIAMOND PLATE STONE GUARD
- \* DOT COMPLIANT LED TRAILER LIGHTS
- \* 1-PIECE ALUMINUM ROOF
- \* REAR SPRING ASSISTED RAMP DOOR
- \* CURB SIDE ENTRY DOOR WITH RV LATCH
- \* 15" STEEL WHEELS
- \* 8 PLY RADIAL TIRES
- \* 6-BOLT HUBS
- \* EXTENDED TONGUE
- \* SIDE SWIVEL TONGUE JACK
- \* 2 5/16" A FRAME COUPLER
- \* INTERIOR LIGHT
- \* 4 - D RINGS
- \* COLOR - WHITE
- \* FINANCING OPTIONS AVAILABLE! CALL (605)-593-5933 OR VISIT [WWW.RAPIDTRAILERSALES.COM](http://WWW.RAPIDTRAILERSALES.COM) FOR MORE INFORMATION.

WHILE EVERY EFFORT HAS BEEN MADE TO ENSURE ACCURATE LISTINGS, THEY MAY NOT REFLECT ALL ACCURATE SPECIFICATIONS. PLEASE CONTACT US TO VERIFY ANY INFORMATION LISTED. WE ARE NOT RESPONSIBLE FOR PRICING OR TYPOGRAPHICAL ERRORS.



Rapid Trailer Sales

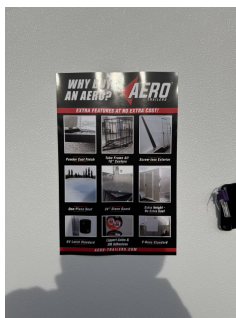
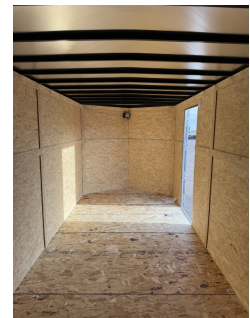
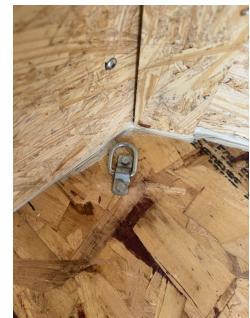
(605) 593-5933

[www.RapidTrailerSales.com](http://www.RapidTrailerSales.com)

4651 E Mall Dr

Box Elder, SD 57719

#AE11687 Continued ...



Rapid Trailer Sales  
(605) 593-5933  
[www.RapidTrailerSales.com](http://www.RapidTrailerSales.com)  
4651 E Mall Dr  
Box Elder, SD 57719