

90"x25' Duralite Livestock



\$29,585

Stock #: DL7084

VIN/Serial: 1D9AL2526TB842770

Category: Livestock

Cond.: New

Year: 2026

Make: Duralite

Model: 90X25 GN LIVESTOCK

Color: Aluminum

Width: 90" **Length:** 25'

GVWR: 17,080

ADDITIONAL DETAILS: MSRP: \$36,981, Height: 80", Weight: 4,560, Payload: 12,520, Axle (lbs): 7,000, Axles: 2, Pull Type: Gooseneck, Roof Type: Flat, Construction: Aluminum

FEATURES:

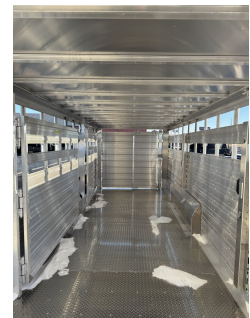
- * ALL ALUMINUM
- * EXTRUDED AND RIVETED CONSTRUCTION
- * 80" INTERIOR HEIGHT
- * 2 - 7000 LB TORSION AXLES
- * ELECTRIC BRAKES
- * 235/85 R16 14 PLY TIRES
- * MATCHING 14 PLY SPARE
- * BULLDOG GOOSENECK COUPLER
- * 2 - OPEN / CLOSE VENTS UNDER BUNK
- * 54" SIDE DOOR
- * FRONT SLATTED DIVIDER GATE
- * MIDDLE SLIDER (SLATTED) CENTER GATE
- * EQUAL COMPARTMENT SPACING
- * UPGRADED C5 SLAM LATCHES ON CENTER GATES (OPEN INSIDE OR OUTSIDE TRAILER)
- * HOLD BACKS ON CENTER GATES
- * SLIDING (SLATTED) REAR TAIL GATE
- * REAR TAILGATE SLAM LATCH
- * 75" TALL, 76" WIDE REAR DOOR OPENING
- * TAIL GATE STOPPER
- * DROP DOWN DOOR IN NECK
- * SIDE STEP RAILS
- * 1- DUAL PIN 10K DROP LEG JACK
- * LED TRAILER LIGHTING - DELUXE PACKAGE
- * REAR LOAD LIGHTS/ REVERSE LIGHTS
- * 2 - LED INTERIOR LIGHTS
- * 8 - EXTERIOR TIE LOOPS (4 PER SIDE)
- * FINANCING OPTIONS AVAILABLE!
- * CALL (605) 593-5933 OR VISIT WWW.RAPIDTRAILERSALES.COM FOR MORE INFORMATION.

WHILE EVERY EFFORT HAS BEEN MADE TO ENSURE ACCURATE LISTINGS, THEY MAY NOT REFLECT ALL ACCURATE SPECIFICATIONS. PLEASE CONTACT US TO VERIFY ANY INFORMATION LISTED. WE ARE NOT RESPONSIBLE FOR PRIC...



Rapid Trailer Sales
(605) 593-5933
www.RapidTrailerSales.com
4651 E Mall Dr
Box Elder, SD 57719

#DL7084 Continued ...



Rapid Trailer Sales
(605) 593-5933
www.RapidTrailerSales.com
4651 E Mall Dr
Box Elder, SD 57719