

## 8.5'x24' AERO Enclosed Cargo



**\$13,550**

**Stock #:** AE11676

**VIN/Serial:** 7PUBC2423TW000463

**Category:** Enclosed Cargo

**Cond.:** New

**Year:** 2026

**Make:** AERO

**Model:** 8.5X24 TA52 SILVER - BLACKOUT TRIM - ALUM WHEELS

**Color:** Silver

**Width:** 8.5" **Length:** 24"

**GVWR:** 9,900

ADDITIONAL DETAILS: MSRP: \$16,938, Height: 84", Weight: 3,700, Payload: 6,200, Axle (lbs): 5,200, Axles: 2, # Ramps: 1, Pull Type: Bumper, Nose Type: V-Front, Roof Type: Flat, Construction: Steel Frame / Aluminum Skin

### FEATURES:

- \* 2 - 5200LB LIPPERT SPRING AXLES
- \* ELECTRIC BRAKES
- \* TUBULAR STEEL FRAME CONSTRUCTION WITH POWDER COAT FINISH
- \* 16" ON CENTER FLOOR, WALL, AND CEILING BOWS
- \* 84" INTERIOR HEIGHT
- \* 28" DEEP V-NOSE
- \* SMOOTH SCREW-LESS 0.030" ALUMINUM EXTERIOR
- \* 24" TALL DIAMOND PLATE STONE GUARD
- \* DOT COMPLIANT LED TRAILER LIGHTS
- \* 1-PIECE ALUMINUM ROOF
- \* REAR RAMP DOOR
- \* 4' BEAVERTAIL
- \* 3/4" TONGUE AND GROOVE OSB FLOORING
- \* CURB SIDE ENTRY DOOR WITH RV LATCH & STEPWELL
- \* 15" ALUMINUM WHEELS
- \* 225/75 R15 8 PLY RADIAL TIRES
- \* 6-BOLT HUBS
- \* EXTENDED TONGUE
- \* 7K DROP LEG TONGUE JACK
- \* 2 5/16" ADJUSTABLE HEIGHT COUPLER
- \* INTERIOR LIGHT
- \* 4 - D RINGS 6000# RATED
- \* COLOR - SILVER WITH BLACKOUT PACKAGE
- \* FINANCING OPTIONS AVAILABLE! CALL (605)-593-5933 OR VISIT [WWW.RAPIDTRAILERSALES.COM](http://WWW.RAPIDTRAILERSALES.COM) FOR MORE INFORMATION.

WHILE EVERY EFFORT HAS BEEN MADE TO ENSURE ACCURATE LISTINGS, THEY MAY NOT REFLECT ALL ACCURATE SPECIFICATIONS. PLEASE CONTACT US TO VERIFY ANY INFORMATION LISTED. WE ARE NOT RESPONSIBLE FOR PRICING OR TYPOGRAPHICAL ERRORS.



Rapid Trailer Sales

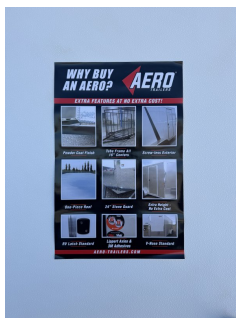
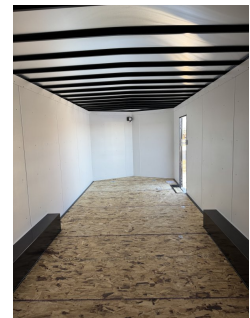
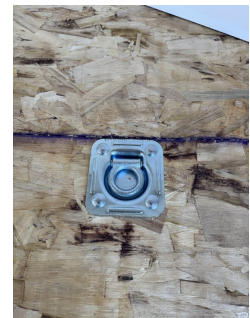
(605) 593-5933

[www.RapidTrailerSales.com](http://www.RapidTrailerSales.com)

4651 E Mall Dr

Box Elder, SD 57719

#AE11676 Continued ...



Rapid Trailer Sales  
(605) 593-5933  
[www.RapidTrailerSales.com](http://www.RapidTrailerSales.com)  
4651 E Mall Dr  
Box Elder, SD 57719