

7'x14' AERO Enclosed Cargo



\$7,675

Stock #: AE11671

VIN/Serial: 7PUBC1424TW000448

Category: Enclosed Cargo

Cond.: New

Year: 2026

Make: AERO

Model: 7X14 TA35 CHARCOAL - BARN DOORS

Color: Charcoal

Width: 7' **Length:** 14'

GVWR: 7,000

ADDITIONAL DETAILS: MSRP: \$9,594, Height: 80", Weight: 2,000, Payload: 5,000, Axle (lbs): 3,500, Axles: 2, Pull Type: Bumper, Nose Type: V-Front, Roof Type: Flat, Construction: Steel Frame / Aluminum Skin, Features: Barn Doors

FEATURES:

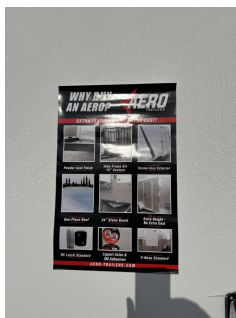
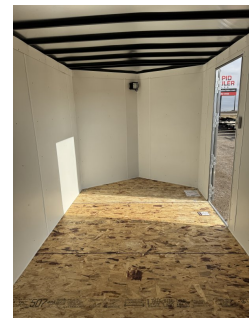
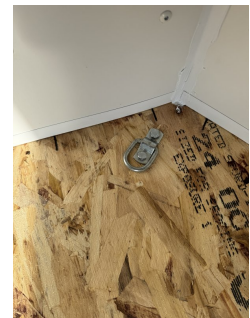
- * 2 - 3500LB LIPPERT SPRING AXLES
- * ELECTRIC BRAKES
- * TUBULAR STEEL FRAME CONSTRUCTION WITH POWDER COAT FINISH
- * 16" ON CENTER FLOOR, WALL, AND CEILING BOWS
- * 80" INTERIOR HEIGHT
- * 3/4" TONGUE AND GROOVE OSB FLOOR
- * 28" DEEP V-NOSE
- * SMOOTH SCREW-LESS 0.030" ALUMINUM EXTERIOR
- * 24" TALL DIAMOND PLATE STONE GUARD
- * DOT COMPLIANT LED TRAILER LIGHTS
- * 1-PIECE ALUMINUM ROOF
- * REAR DOUBLE BARN DOORS
- * CURB SIDE ENTRY DOOR WITH RV LATCH
- * 15" STEEL WHEELS
- * 205/75 R15 6 PLY RADIAL TIRES
- * 6-BOLT HUBS
- * EXTENDED TONGUE
- * SIDE SWIVEL TONGUE JACK
- * 2 5/16" A FRAME COUPLER
- * INTERIOR LIGHT
- * 4 - D RINGS
- * COLOR - CHARCOAL
- * FINANCING OPTIONS AVAILABLE! CALL (605)-593-5933 OR VISIT WWW.RAPIDTRAILERSALES.COM FOR MORE INFORMATION.

WHILE EVERY EFFORT HAS BEEN MADE TO ENSURE ACCURATE LISTINGS, THEY MAY NOT REFLECT ALL ACCURATE SPECIFICATIONS. PLEASE CONTACT US TO VERIFY ANY INFORMATION LISTED. WE ARE NOT RESPONSIBLE FOR PRICING OR TYPOGRAPHICAL ERRORS.



Rapid Trailer Sales
(605) 593-5933
www.RapidTrailerSales.com
4651 E Mall Dr
Box Elder, SD 57719

#AE11671 Continued ...



Rapid Trailer Sales
(605) 593-5933
www.RapidTrailerSales.com
4651 E Mall Dr
Box Elder, SD 57719