

## 8.5'x20' AERO Enclosed Cargo



**\$11,395**

**Stock #:** AE11665

**VIN/Serial:** 7PUBC2021TW000466

**Category:** Enclosed Cargo

**Cond.:** New

**Year:** 2026

**Make:** AERO

**Model:** 8.5X20 TA52 BLACKOUT - POLYCOR

**Color:** Black

**Width:** 8.5' **Length:** 20'

**GVWR:** 9,900

ADDITIONAL DETAILS: MSRP: \$16,119, Height: 84", Weight: 3,500, Payload: 6,400, Axle (lbs): 5,200, Axles: 2, # Ramps: 1, Pull Type: Bumper, Nose Type: V-Front, Roof Type: Flat, Construction: Steel Frame / Aluminum Skin

STORM DAMAGE - CALL FOR DETAILS

- \* 2 - 5200LB LIPPERT SPRING AXLES
- \* ELECTRIC BRAKES
- \* TUBULAR STEEL FRAME CONSTRUCTION WITH POWDER COAT FINISH
- \* 16" ON CENTER FLOOR, WALL, AND CEILING BOWS
- \* 84" INTERIOR HEIGHT
- \* 28" DEEP V-NOSE
- \* SMOOTH SCREW-LESS EXTERIOR SKIN
- \* 0.080" POLYCOR SKIN UPGRADE
- \* 24" TALL DIAMOND PLATE STONE GUARD
- \* DOT COMPLIANT LED TRAILER LIGHTS
- \* 1-PIECE ALUMINUM ROOF
- \* REAR RAMP DOOR
- \* 4' BEAVERTAIL
- \* 3/4" TONGUE AND GROOVE OSB FLOOR
- \* CURB SIDE ENTRY DOOR WITH RV LATCH & STEPWELL
- \* 15" ALUMINUM WHEELS
- \* 225/75 R15 8 PLY RADIAL TIRES
- \* 6-BOLT HUBS
- \* EXTENDED TONGUE
- \* 7K DROP LEG TONGUE JACK
- \* 2 5/16" ADJUSTABLE HEIGHT COUPLER
- \* INTERIOR LIGHT
- \* 4 - D RINGS 6000# RATED
- \* COLOR - BLACK WITH BLACKOUT TRIM PACKAGE
- \* FINANCING OPTIONS AVAILABLE! CALL (605)-593-5933 OR VISIT [WWW.RAPIDTRAILERSALES.COM](http://WWW.RAPIDTRAILERSALES.COM) FOR MORE INFORMATION.

WHILE EVERY EFFORT HAS BEEN MADE TO ENSURE ACCURATE LISTINGS, THEY MAY NOT REFLECT ALL ACCURATE SPECIFICATIONS. PLEASE CONTACT US TO VERIFY ANY INFORMATION LISTED. WE ARE NOT RESPONSIBLE FOR PRICING OR TYPOGRAPHICAL ERRORS.



Rapid Trailer Sales

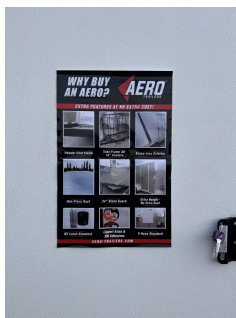
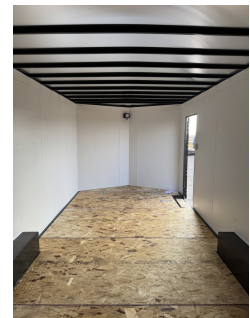
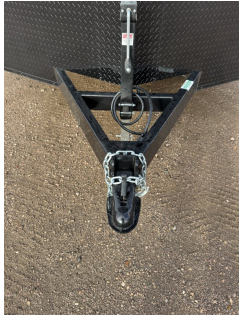
(605) 593-5933

[www.RapidTrailerSales.com](http://www.RapidTrailerSales.com)

4651 E Mall Dr

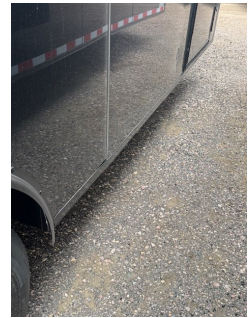
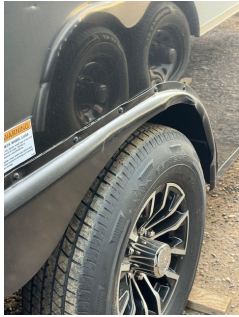
Box Elder, SD 57719

#AE11665 Continued ...



Rapid Trailer Sales  
(605) 593-5933  
[www.RapidTrailerSales.com](http://www.RapidTrailerSales.com)  
4651 E Mall Dr  
Box Elder, SD 57719

#AE11665 Continued ...



Rapid Trailer Sales  
(605) 593-5933  
[www.RapidTrailerSales.com](http://www.RapidTrailerSales.com)  
4651 E Mall Dr  
Box Elder, SD 57719