

8.5'x28' AERO Enclosed Cargo



\$12,875

Stock #: AE11660

VIN/Serial: 7PUBC2827TW000458

Category: Enclosed Cargo

Cond.: New

Year: 2026

Make: AERO

Model: 8.5X28 14K CHARCOAL

Color: Charcoal

Width: 8.5' **Length:** 28'

GVWR: 14,000

ADDITIONAL DETAILS: MSRP: \$19,844, Height: 84", Weight: 4,400, Payload: 9,600, Axle (lbs): 7,000, Axles: 2, # Ramps: 1, Pull Type: Bumper, Nose Type: V-Front, Roof Type: Flat, Construction: Steel Frame / Aluminum Skin

STORM DAMAGE - CALL FOR DETAILS

- * 2 - 7000LB LIPPERT SPRING AXLES
- * ELECTRIC BRAKES
- * STEEL FRAME CONSTRUCTION WITH POWDER COAT FINISH
- * 16" ON CENTER FLOOR, WALL, AND CEILING BOWS
- * 84" INTERIOR HEIGHT
- * 82" REAR DOOR OPENING HEIGHT
- * 28" DEEP V-NOSE
- * SMOOTH SCREW-LESS 0.030" ALUMINUM EXTERIOR
- * 24" TALL DIAMOND PLATE STONE GUARD
- * DOT COMPLIANT LED TRAILER LIGHTS
- * 1-PIECE ALUMINUM ROOF
- * 3/4" TONGUE AND GROOVE OSB FLOOR
- * 3/8" PLYWOOD WALL COVERING
- * REAR RAMP DOOR
- * 4' BEAVERTAIL
- * CURB SIDE ENTRY DOOR WITH RV LATCH
- * 16" STEEL WHEELS
- * 235/80 R16 10 PLY RADIAL TIRES
- * 8-BOLT HUBS
- * EXTENDED TONGUE
- * 7K DROP LEG TONGUE JACK
- * 2 5/16" ADJUSTABLE HEIGHT COUPLER
- * 1 - 12V INTERIOR DOME LIGHT
- * 4 - D RINGS 6000# RATED
- * COLOR - CHARCOAL
- * FINANCING OPTIONS AVAILABLE! CALL (605)-593-5933 OR VISIT WWW.RAPIDTRAILERSALES.COM FOR MORE INFORMATION.

WHILE EVERY EFFORT HAS BEEN MADE TO ENSURE ACCURATE LISTINGS, THEY MAY NOT REFLECT ALL ACCURATE SPECIFICATIONS. PLEASE CONTACT US TO VERIFY ANY INFORMATION LISTED. WE ARE NOT RESPONSIBLE FOR PRIC...



Rapid Trailer Sales

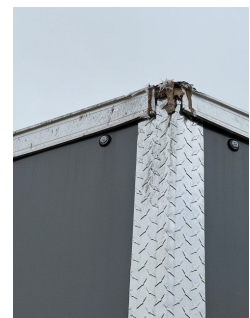
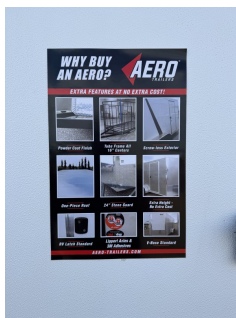
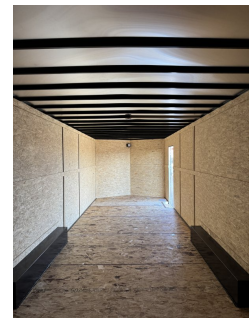
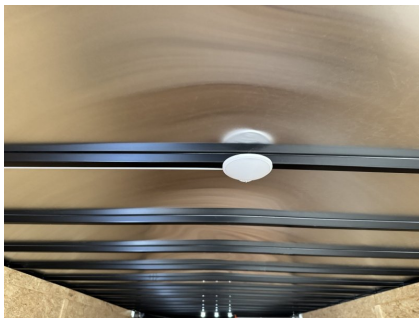
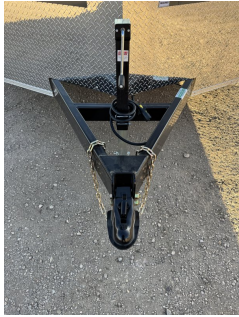
(605) 593-5933

www.RapidTrailerSales.com

4651 E Mall Dr

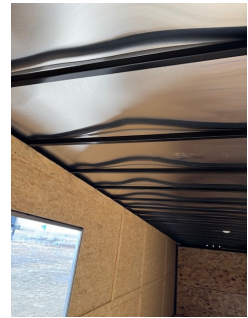
Box Elder, SD 57719

#AE11660 Continued ...



Rapid Trailer Sales
(605) 593-5933
www.RapidTrailerSales.com
4651 E Mall Dr
Box Elder, SD 57719

#AE11660 Continued ...



Rapid Trailer Sales
(605) 593-5933
www.RapidTrailerSales.com
4651 E Mall Dr
Box Elder, SD 57719