

8.5'x16' AERO Enclosed Cargo



\$11,285

Stock #: AE11638

VIN/Serial: 7PUBC1621TW000341

Category: Enclosed Cargo

Cond.: New

Year: 2026

Make: AERO

Model: 8.5X16 TA52 UTV CHARCOAL BLACKOUT

Color: Charcoal

Width: 8.5' **Length:** 16'

GVWR: 9,900

ADDITIONAL DETAILS: MSRP: \$14,106, Height: 84", Weight: 3,200, Payload: 6,700, Axle (lbs): 5,200, Axles: 2, # Ramps: 1, Pull Type: Bumper, Nose Type: V-Front, Roof Type: Flat, Construction: Steel Frame / Aluminum Skin

FEATURES:

- * 2 - 5200LB LIPPERT SPRING AXLES
- * ELECTRIC BRAKES
- * STEEL FRAME CONSTRUCTION WITH POWDER COAT FINISH
- * 16" ON CENTER FLOOR, WALL, AND CEILING BOWS
- * 84" INTERIOR HEIGHT
- * 28" DEEP V-NOSE
- * SMOOTH SCREW-LESS 0.030" ALUMINUM EXTERIOR
- * 24" TALL DIAMOND PLATE STONE GUARD
- * DOT COMPLIANT LED TRAILER LIGHTS
- * 1-PIECE ALUMINUM ROOF
- * 3/4" TONGUE AND GROOVE OSB FLOOR
- * REAR RAMP DOOR
- * BEAVERTAIL
- * ROAD SIDE ENTRY DOOR WITH RV LATCH & STEPWELL
- * 15" ALUMINUM WHEELS
- * 225/75 R15 8 PLY RADIAL TIRES
- * 6-BOLT HUBS
- * EXTENDED TONGUE
- * 7K DROP LEG TONGUE JACK
- * 2 5/16" ADJUSTABLE HEIGHT COUPLER
- * INTERIOR LIGHT
- * 4- D RINGS 6000# RATED
- * COLOR - CHARCOAL WITH BLACKOUT PACKAGE
- * FINANCING OPTIONS AVAILABLE! CALL (605)-593-5933 OR VISIT WWW.RAPIDTRAILERSALES.COM FOR MORE INFORMATION.

WHILE EVERY EFFORT HAS BEEN MADE TO ENSURE ACCURATE LISTINGS, THEY MAY NOT REFLECT ALL ACCURATE SPECIFICATIONS. PLEASE CONTACT US TO VERIFY ANY INFORMATION LISTED. WE ARE NOT RESPONSIBLE FOR PRICING OR TYPOGRAPHICAL ERRORS.



Rapid Trailer Sales

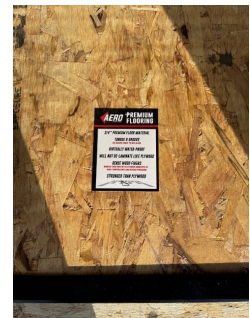
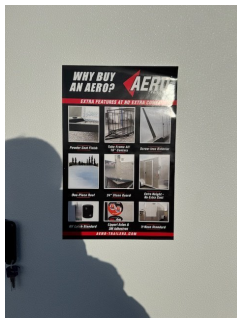
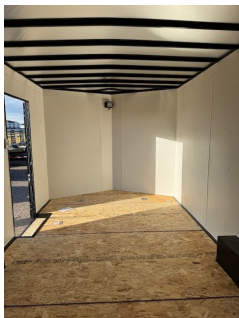
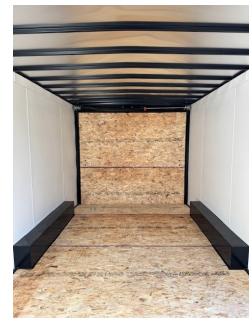
(605) 593-5933

www.RapidTrailerSales.com

4651 E Mall Dr

Box Elder, SD 57719

#AE11638 Continued ...



Rapid Trailer Sales
(605) 593-5933
www.RapidTrailerSales.com
4651 E Mall Dr
Box Elder, SD 57719