

7.5'x29' NEO Enclosed Cargo



~~\$18,995~~ **\$17,997**

Stock #: NE10090

VIN/Serial: 54BNA3226T1332255

Category: Enclosed Cargo/Aluminum

Cond.: New

Year: 2026

Make: NEO

Model: 7.5X29 7K NASX +6" HEIGHT

Color: Silver/Charcoal

Width: 7.5' **Length:** 29'

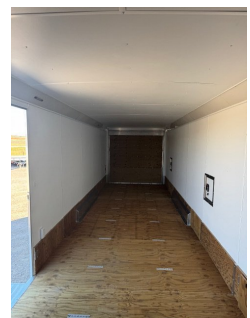
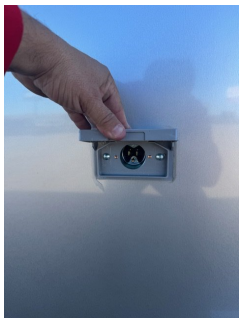
GVWR: 7,000

ADDITIONAL DETAILS: MSRP: \$23,744, Height: 84", Weight: 2,920, Payload: 4,080, Axle (lbs): 3,500, Axles: 2, # Ramps: 2, Pull Type: Bumper, Nose Type: V-Front Ramp, Roof Type: Round, Construction: Aluminum

FEATURES:

- * 2 - 3500 LB DEXTER TORSION AXLES
- * SPREAD AXLE CONFIGURATION
- * EZ LUBE HUBS
- * ELECTRIC BRAKES
- * ALUMINUM FRAME
- * 16" ON CENTER FLOOR BRACING UPGRADE
- * 16" ON CENTER WALL AND ROOF BRACING
- * 6" ADDITIONAL HEIGHT (84.5" INTERIOR)
- * 79.25" REAR DOOR OPENING
- * 32" SIDE DOOR
- * SLIDE OUT STEP
- * 2 FUEL DOORS ROAD SIDE 14" X 14"
- * FRONT ROAD SIDE CABLELESS RAMP DOOR
- * BLACK SALEM OPEN / CLOSE SIDE VENTS
- * 205/75 R15 TIRES
- * ALUMINUM WHEELS
- * BLACKOUT STONE GUARD & FENDERS
- * .030 EXTERIOR SKIN
- * SEAMLESS ROOF
- * LED INTERIOR STRIP LIGHTS
- * LED TRAILER LIGHTS
- * LED LOADING LIGHTS ABOVE RAMP DOORS
- * REVERSE LIGHTS
- * MOTORBASE PASS THRU PLUG - 15 AMP
- * 2 5/16" COUPLER
- * 7 WAY TRAILER PLUG
- * TOP CRANK TONGUE JACK
- * 24" ATP STONE GUARD
- * 3/4" MARINE PLYWOOD FLOOR
- * WHITE VINYL WALLS
- * WHITE VINYL CEILI...

#NE10090 Continued ...



#NE10090 Continued ...

