

## 6'x12' AERO Enclosed Cargo



**\$7,125**

**Stock #:** AE11618

**VIN/Serial:** 7PUBC1226TW000258

**Category:** Enclosed Cargo

**Cond.:** New

**Year:** 2026

**Make:** AERO

**Model:** 6X12 TA35 WHITE

**Color:** White

**Width:** 6' **Length:** 12'

**GVWR:** 7,000

ADDITIONAL DETAILS: MSRP: \$8,906, Height: 74", Weight: 1,680, Payload: 5,320, Axle (lbs): 3,500, Axles: 2, # Ramps: 1, Pull Type: Bumper, Nose Type: V-Front, Roof Type: Flat, Construction: Steel Frame / Aluminum Skin

### FEATURES:

- \* 2-3500LB LIPPERT SPRING AXLES
- \* ELECTRIC BRAKES
- \* ALL TUBULAR STEEL FRAME CONSTRUCTION WITH POWDER COAT FINISH
- \* 16" ON CENTER FLOOR, WALL, AND CEILING BOWS
- \* 74" INTERIOR HEIGHT
- \* 70" REAR DOOR OPENING HEIGHT
- \* 28" DEEP V-NOSE
- \* SMOOTH SCREW-LESS 0.030" ALUMINUM EXTERIOR
- \* 24" TALL DIAMOND PLATE STONE GUARD
- \* DOT COMPLIANT LED TRAILER LIGHTS
- \* 1-PIECE ALUMINUM ROOF
- \* 3/4" TONGUE AND GROOVE OSB FLOOR
- \* REAR RAMP DOOR
- \* CURB SIDE ENTRY DOOR WITH RV LATCH
- \* 15" STEEL WHEELS
- \* 205/75 R15 6 PLY RADIAL TIRES
- \* 6-BOLT HUBS
- \* EXTENDED TONGUE
- \* 5000# SIDE SWIVEL TONGUE JACK
- \* 2-5/16" A FRAME COUPLER
- \* INTERIOR LIGHT
- \* 4 - D RINGS
- \* COLOR - WHITE
- \* FINANCING OPTIONS AVAILABLE! CALL (605)-593-5933 OR VISIT [WWW.RAPIDTRAILERSALES.COM](http://WWW.RAPIDTRAILERSALES.COM) FOR MORE INFORMATION.

WHILE EVERY EFFORT HAS BEEN MADE TO ENSURE ACCURATE LISTINGS, THEY MAY NOT REFLECT ALL ACCURATE SPECIFICATIONS. PLEASE CONTACT US TO VERIFY ANY INFORMATION LISTED. WE ARE NOT RESPONSIBLE FOR PRICING OR TYPOGRAPHICAL ERRORS.



Rapid Trailer Sales

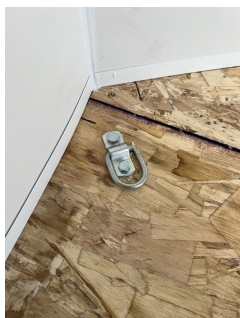
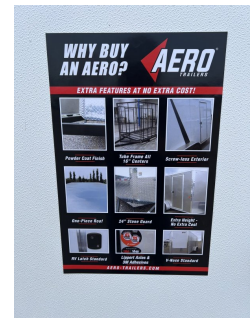
(605) 593-5933

[www.RapidTrailerSales.com](http://www.RapidTrailerSales.com)

4651 E Mall Dr

Box Elder, SD 57719

#AE11618 Continued ...



Rapid Trailer Sales  
(605) 593-5933  
[www.RapidTrailerSales.com](http://www.RapidTrailerSales.com)  
4651 E Mall Dr  
Box Elder, SD 57719