

## 8.5'x28' AERO Enclosed Cargo



**\$15,675**

**Stock #:** AE11603

**VIN/Serial:** 7PUBC282XTW000230

**Category:** Enclosed Cargo

**Cond.:** New

**Year:** 2026

**Make:** AERO

**Model:** 8.5X28 14K WHITE

**Color:** White

**Width:** 8.5' **Length:** 28'

**GVWR:** 14,000

ADDITIONAL DETAILS: MSRP: \$19,594, Height: 84", Weight: 4,400, Payload: 9,600, Axle (lbs): 7,000, Axles: 2, # Ramps: 1, Pull Type: Bumper, Nose Type: V-Front, Roof Type: Flat, Construction: Steel Frame / Aluminum Skin

### FEATURES:

- \* 2-7000LB LIPPERT SPRING AXLES
- \* ELECTRIC BRAKES
- \* STEEL FRAME CONSTRUCTION WITH POWDER COAT FINISH
- \* 16" ON CENTER FLOOR, WALL, AND CEILING BOWS
- \* 84" INTERIOR HEIGHT
- \* 82" REAR DOOR OPENING HEIGHT
- \* 28" DEEP V-NOSE
- \* SMOOTH SCREW-LESS 0.030" ALUMINUM EXTERIOR
- \* 24" TALL DIAMOND PLATE STONE GUARD
- \* DOT COMPLIANT LED TRAILER LIGHTS
- \* 1-PIECE ALUMINUM ROOF
- \* 3/4" TONGUE AND GROOVE OSB FLOOR
- \* 3/8" PLYWOOD WALL COVERING
- \* REAR RAMP DOOR
- \* 4' BEAVERTAIL
- \* CURB SIDE ENTRY DOOR WITH RV LATCH
- \* 16" STEEL WHEELS
- \* 235/80 R16 10 PLY RADIAL TIRES
- \* 8-BOLT HUBS
- \* EXTENDED TONGUE
- \* 7K DROP LEG TONGUE JACK
- \* 2 5/16" ADJUSTABLE HEIGHT COUPLER
- \* INTERIOR LIGHT
- \* 4- D RINGS 6000# RATED
- \* COLOR- WHITE
- \* FINANCING OPTIONS AVAILABLE! CALL (605)-593-5933 OR VISIT [WWW.RAPIDTRAILERSALES.COM](http://WWW.RAPIDTRAILERSALES.COM) FOR MORE INFORMATION.

WHILE EVERY EFFORT HAS BEEN MADE TO ENSURE ACCURATE LISTINGS, THEY MAY NOT REFLECT ALL ACCURATE SPECIFICATIONS. PLEASE CONTACT US TO VERIFY ANY INFORMATION LISTED. WE ARE NOT RESPONSIBLE FOR PRIC...



Rapid Trailer Sales

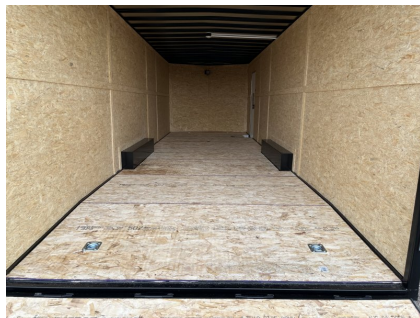
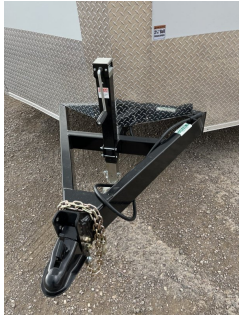
(605) 593-5933

[www.RapidTrailerSales.com](http://www.RapidTrailerSales.com)

4651 E Mall Dr

Box Elder, SD 57719

#AE11603 Continued ...



Rapid Trailer Sales  
(605) 593-5933  
[www.RapidTrailerSales.com](http://www.RapidTrailerSales.com)  
4651 E Mall Dr  
Box Elder, SD 57719