

x AERO Enclosed Cargo



\$10,795

Stock #: AE11564

VIN/Serial: 7PUBC162XTW000032

Category: Enclosed Cargo

Cond.: New

Year: 2026

Make: AERO

Model: 8.5X16 TA52 UTV WHITE

Color: White

Width: Length:

GVWR: 9,900

ADDITIONAL DETAILS: MSRP: \$13,494, Weight: 3,200, Payload: 6,700, Axle (lbs): 5,200, Axles: 2, # Ramps: 1, Pull Type: Bumper, Nose Type: V-Front, Roof Type: Flat, Construction: Steel Frame / Aluminum Skin

FEATURES:

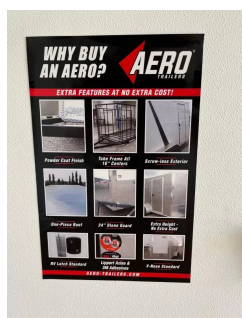
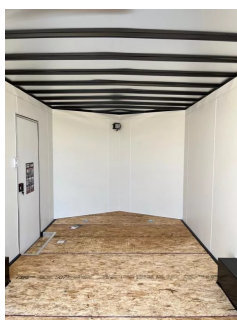
- * 2-5200LB LIPPERT SPRING AXLES
- * ELECTRIC BRAKES
- * STEEL FRAME CONSTRUCTION WITH POWDER COAT FINISH
- * 16" ON CENTER FLOOR, WALL, AND CEILING BOWS
- * 84" INTERIOR HEIGHT
- * 28" DEEP V-NOSE
- * SMOOTH SCREW-LESS ALUMINUM EXTERIOR
- * 24" TALL DIAMOND PLATE STONE GUARD
- * DOT COMPLIANT LED TRAILER LIGHTS
- * 1-PIECE ALUMINUM ROOF
- * 3/4" TONGUE AND GROOVE OSB FLOOR
- * REAR RAMP DOOR
- * BEAVERTAIL
- * ROAD SIDE ENTRY DOOR WITH RV LATCH
- * 15" STEEL WHEELS
- * 8 PLY RADIAL TIRES
- * 6-BOLT HUBS
- * EXTENDED TONGUE
- * 7K TONGUE JACK
- * 2 5/16" ADJUSTABLE COUPLER
- * INTERIOR LIGHT
- * 4- D RINGS 6000# RATED
- * COLOR- WHITE
- * FINANCING OPTIONS AVAILABLE! CALL (605)-593-5933 OR VISIT WWW.RAPIDTRAILERSALES.COM FOR MORE INFORMATION.

WHILE EVERY EFFORT HAS BEEN MADE TO ENSURE ACCURATE LISTINGS, THEY MAY NOT REFLECT ALL ACCURATE SPECIFICATIONS. PLEASE CONTACT US TO VERIFY ANY INFORMATION LISTED. WE ARE NOT RESPONSIBLE FOR PRICING OR TYPOGRAPHICAL ERRORS.



Rapid Trailer Sales
 (605) 593-5933
www.RapidTrailerSales.com
 4651 E Mall Dr
 Box Elder, SD 57719

#AE11564 Continued ...



Rapid Trailer Sales
(605) 593-5933
www.RapidTrailerSales.com
4651 E Mall Dr
Box Elder, SD 57719