



~~\$10,295~~ **\$9,995**

**Stock #:** AE11536

**VIN/Serial:** 7PUBC1623SW000887

**Category:** Enclosed Cargo

**Cond.:** New

**Year:** 2025

**Make:** AERO

**Model:** 7.5X16 TA35 UTV CHARCOAL BLACKOUT

**Color:** Charcoal

**Width:** **Length:**

**GVWR:** 7,000

ADDITIONAL DETAILS: MSRP: \$12,869, Weight: 2,700, Payload: 4,300, Axle (lbs): 3,500, Axles: 2, # Ramps: 1, Pull Type: Bumper, Nose Type: V-Front, Roof Type: Flat, Construction: Steel Frame / Aluminum Skin

**\*\*2025 MODEL YEAR CLOSE OUT - \$300 OFF!\*\***

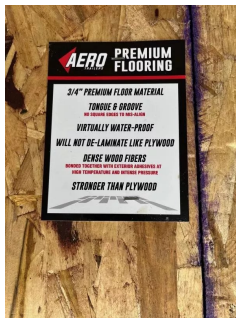
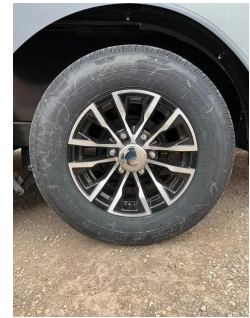
- \* 2-3500LB LIPPERT SPRING AXLES
- \* ELECTRIC BRAKES
- \* ALL TUBULAR CONSTRUCTION WITH POWDER COAT FINISH
- \* 16" ON CENTER FLOOR, WALL, AND CEILING BOWS
- \* \*\*88" INTERIOR HEIGHT (8" OVER STANDARD)\*\*
- \* 84" REAR DOOR OPENING
- \* 28" V-NOSE
- \* SMOOTH SCREW-LESS 0.030" ALUMINUM EXTERIOR
- \* 24" TALL DIAMOND PLATE STONE GUARD
- \* DOT COMPLIANT LED TRAILER LIGHTS
- \* 1-PIECE ALUMINUM ROOF
- \* 3/4" TONGUE AND GROOVE OSB FLOOR
- \* REAR RAMP DOOR
- \* \*\*ROAD SIDE ENTRY DOOR WITH RV LATCH\*\*
- \* \*\*15" ALUMINUM WHEELS\*\*
- \* 6 PLY RADIAL TIRES
- \* 6-BOLT HUBS
- \* EXTENDED TONGUE
- \* STANDARD TONGUE JACK
- \* 2 5/16" BALL COUPLER
- \* INTERIOR LIGHT
- \* 4- D RINGS
- \* COLOR- CHARCOAL WITH BLACKOUT PACKAGE
- \* FINANCING OPTIONS AVAILABLE! CALL (605)-593-5933 OR VISIT [WWW.RAPIDTRAILERSALES.COM](http://WWW.RAPIDTRAILERSALES.COM) FOR MORE INFORMATION.

WHILE EVERY EFFORT HAS BEEN MADE TO ENSURE ACCURATE LISTINGS, THEY MAY NOT REFLECT ALL ACCURATE SPECIFICATIONS. PLEASE CONTACT US TO VERIFY ANY INFORMATION LISTED. WE ARE NOT RESPONSIBLE FOR PRICING OR TYPOGRAPHICAL ERRORS.



Rapid Trailer Sales  
 (605) 593-5933  
[www.RapidTrailerSales.com](http://www.RapidTrailerSales.com)  
 4651 E Mall Dr  
 Box Elder, SD 57719

A large, black, enclosed cargo trailer is shown from a side-rear perspective. It has dual axles with multi-spoke wheels and a heavy-duty hitch assembly at the front. The trailer is parked on a gravel surface, and the background shows a cloudy sky and some distant industrial buildings.



**Rapid Trailer Sales**  
**(605) 593-5933**  
**www.RapidTrailerSales.com**  
**4651 E Mall Dr**  
**Box Elder, SD 57719**