

**~~\$12,645~~ \$12,345****Stock #:** AE11493**VIN/Serial:** 7PUBC2425SW000608**Category:** Enclosed Cargo**Cond.:** New**Year:** 2025**Make:** AERO**Model:** 8.5X24 TA52 CHARCOAL**Color:** Charcoal**Width: Length:****GVWR:** 9,900

ADDITIONAL DETAILS: MSRP: \$15,806, Weight: 3,700, Payload: 6,200, Axle (lbs): 5,200, Axles: 2, # Ramps: 1, Pull Type: Bumper, Nose Type: V-Front, Roof Type: Flat, Construction: Steel Frame / Aluminum Skin

****2025 MODEL YEAR CLOSE OUT - \$300 OFF!****

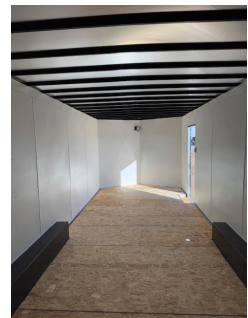
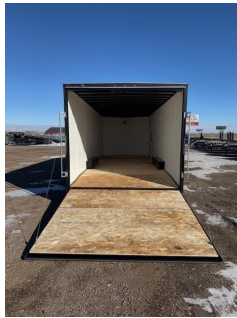
- * 2-5200LB LIPPERT SPRING AXLES
- * ELECTRIC BRAKES
- * STEEL FRAME CONSTRUCTION WITH POWDER COAT FINISH
- * 16" ON CENTER FLOOR, WALL, AND CEILING BOWS
- * 84" INTERIOR HEIGHT
- * 28" V-NOSE
- * SMOOTH SCREW-LESS 0.030" ALUMINUM EXTERIOR
- * 24" TALL DIAMOND PLATE STONE GUARD
- * DOT COMPLIANT LED TRAILER LIGHTS
- * 1-PIECE ALUMINUM ROOF
- * REAR RAMP DOOR
- * 4' BEAVERTAIL
- * 3/4" TONGUE AND GROOVE OSB FLOOR
- * CURB SIDE ENTRY DOOR WITH RV LATCH
- * 15" STEEL WHEELS
- * 8 PLY RADIAL TIRES
- * 6-BOLT HUBS
- * EXTENDED TONGUE
- * 7K TONGUE JACK
- * 2 5/16" ADJUSTABLE HEIGHT COUPLER
- * INTERIOR LIGHT
- * 4- D RINGS 6000# RATED
- * COLOR- CHARCOAL
- * FINANCING OPTIONS AVAILABLE! CALL (605)-593-5933 OR VISIT WWW.RAPIDTRAILERSALES.COM FOR MORE INFORMATION.

WHILE EVERY EFFORT HAS BEEN MADE TO ENSURE ACCURATE LISTINGS, THEY MAY NOT REFLECT ALL ACCURATE SPECIFICATIONS. PLEASE CONTACT US TO VERIFY ANY INFORMATION LISTED. WE ARE NOT RESPONSIBLE FOR PRICING OR TYPOGRAPHICAL ERRORS.



Rapid Trailer Sales
(605) 593-5933
www.RapidTrailerSales.com
4651 E Mall Dr
Box Elder, SD 57719

#AE11493 Continued ...



Rapid Trailer Sales
(605) 593-5933
www.RapidTrailerSales.com
4651 E Mall Dr
Box Elder, SD 57719