

**~~\$11,675~~ \$10,995****Stock #:** AE11403**VIN/Serial:** 7PUBC1823SW000319**Category:** Enclosed Cargo**Cond.:** New**Year:** 2025**Make:** AERO**Model:** 8.5X18 TA52 DOVE GRAY BARN DOORS BLACKOUT**Color:** Gray**Width: Length:****GVWR:** 9,900

ADDITIONAL DETAILS: MSRP: \$14,594, Weight: 3,350, Payload: 6,550, Axle (lbs): 5,200, Axles: 2, Pull Type: Bumper, Nose Type: V-Front, Roof Type: Flat, Construction: Steel Frame / Aluminum Skin

****2025 MODEL YEAR CLOSE OUT!****

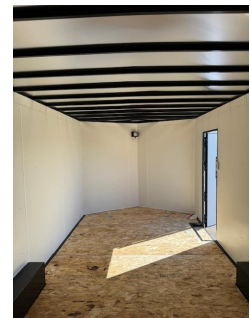
- * 2-5200LB LIPPERT SPRING AXLES
- * ELECTRIC BRAKES
- * STEEL FRAME CONSTRUCTION WITH POWDER COAT FINISH
- * 16" ON CENTER FLOOR, WALL, AND CEILING BOWS
- * 84" INTERIOR HEIGHT
- * 28" V-NOSE
- * SMOOTH SCREW-LESS ALUMINUM EXTERIOR
- * 24" TALL STONE GUARD
- * DOT COMPLIANT LED TRAILER LIGHTS
- * 1-PIECE ALUMINUM ROOF
- * REAR DOUBLE BARN DOORS
- * STRAIGHT FLOOR
- * 3/4" TONGUE AND GROOVE OSB FLOOR
- * CURB SIDE ENTRY DOOR WITH RV LATCH
- * 15" ALUMINUM WHEELS
- * RADIAL TIRES
- * 6-BOLT HUBS
- * EXTENDED TONGUE
- * 7K TONGUE JACK
- * 2 5/16" ADJUSTABLE COUPLER
- * INTERIOR LIGHT
- * 4- D RINGS 6000# RATED
- * COLOR- DOVE GRAY WITH BLACKOUT PACKAGE
- * FINANCING OPTIONS AVAILABLE! CALL (605)-593-5933 OR VISIT WWW.RAPIDTRAILERSALES.COM FOR MORE INFORMATION.

WHILE EVERY EFFORT HAS BEEN MADE TO ENSURE ACCURATE LISTINGS, THEY MAY NOT REFLECT ALL ACCURATE SPECIFICATIONS. PLEASE CONTACT US TO VERIFY ANY INFORMATION LISTED. WE ARE NOT RESPONSIBLE FOR PRICING OR TYPOGRAPHICAL ERRORS.



Rapid Trailer Sales
(605) 593-5933
www.RapidTrailerSales.com
4651 E Mall Dr
Box Elder, SD 57719

#AE11403 Continued ...



Rapid Trailer Sales
(605) 593-5933
www.RapidTrailerSales.com
4651 E Mall Dr
Box Elder, SD 57719